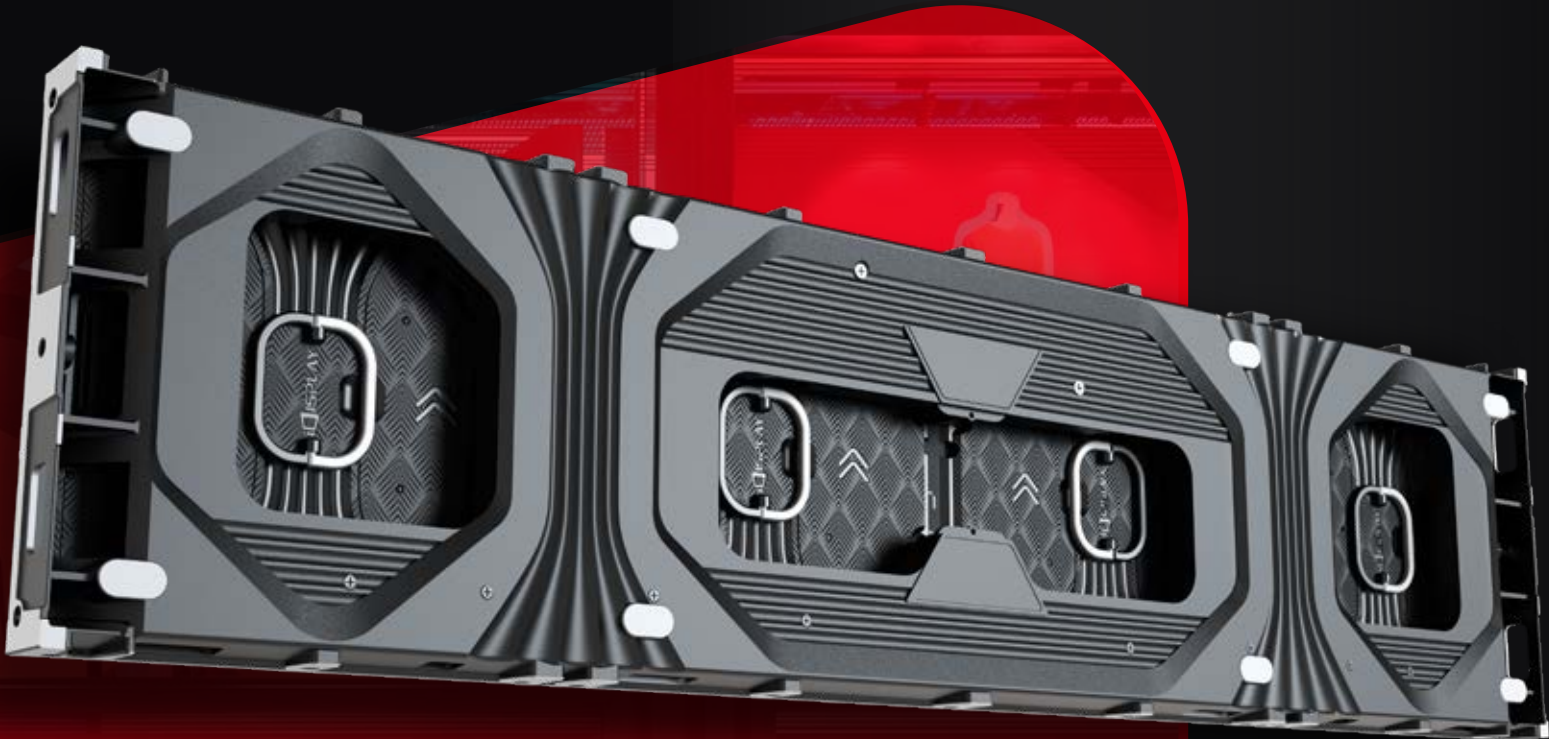


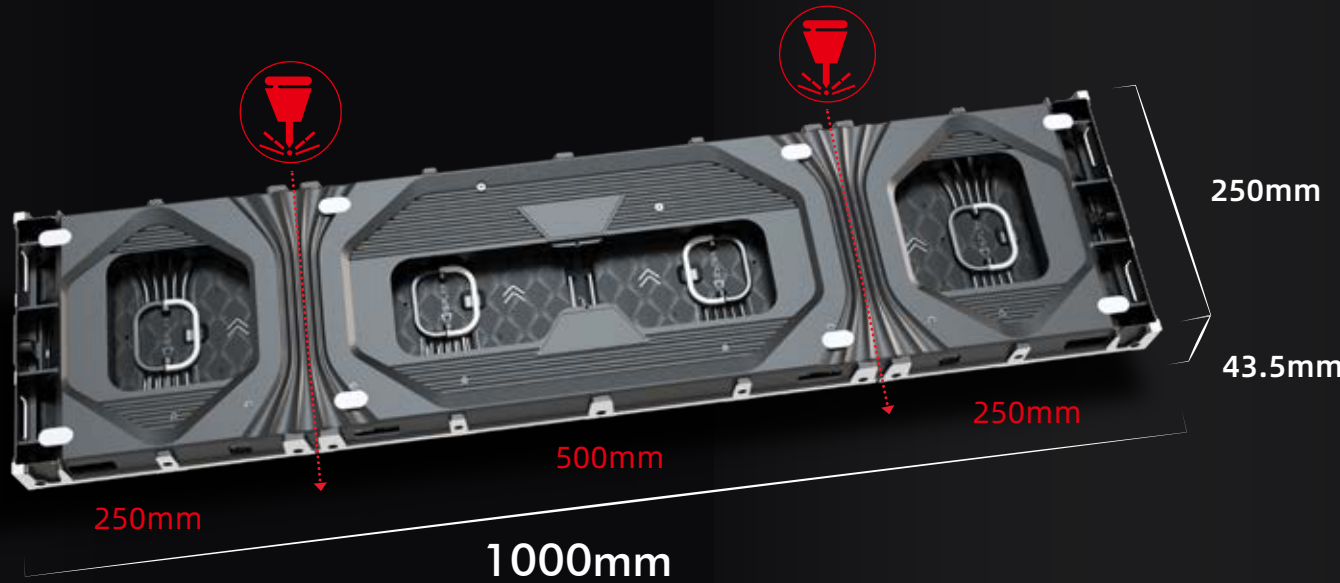
Unity

Indoor Lightweight Front
and Rear Service Screen



Flexible Panel Sizes

Unity comes with a standard panel size of 1000*250mm, but that's not all! It can be easily cut into two smaller sizes: 750*250mm and 500*250mm. This flexibility allows you to customize your display based on your specific needs.



22kg/m²



Pixel Pitch	1.56mm	1.953mm	2.6mm	3.91mm
LED Configuration	SMD1010	SMD1212		SMD2020
Pixel Density	409,600dot/m ²	262,144dot/m ²	147,456dot/m ²	65,536dot/m ²
Module size	250*250mm			
Module Resolution	160*160dot	128*128dot	96*96dot	64*64dot
Cabinet Size	1000*250mm			
Cabinet Resolution	640*160dots	512*128dot	384*96dot	256*64dots
CabinetWeight	5.5kg			
IP Rating (front/back)	IP20			
Brightness	600-1000cd/m ² 2500-3500cd/m ²			
Viewing Angle	160°/160			
View Distance	>1.5m	>1.9m	>2.6m	>4m
Gray scale	1 4bit			
Display Scale	4398 Billion			
Max.Power Consumption	550W/m ²			
Ave.Power Consumption	160W/m ²			
Refresh Frequency	≥3840HZ			
Environmental	indoor/semi-outdoor			
Brightness Adjustment	0-100 levels adjustable			
Operation Power	AC100-240V 50/60Hz			
Brightness	indoor 500-800nits,semioutdoor 3000-5000nits			

Description

Unity is an ideal panel for indoor and semi-outdoor applications, particularly in scenarios necessitating both front and rear service. This versatile panel not only accommodates front and rear servicing but also offers flexible front and rear installation options. It stands out as an excellent choice for retail, commercial, and particularly window-facing displays.

Shenzhen iDisplay Technology Co.,Ltd.

Add: 3rd Floor,5th Building, FLT industrial park, Longhua, Shenzhen, China
Factory: 5th Building, No.6 of Xinhua Avenue, Chengjiang, Zhongkai, Huizhou, China
Tel phone: 86-755-85280348
E-mail: hello@idisplayled.com
www.idisplayled.com

iDISPLAY

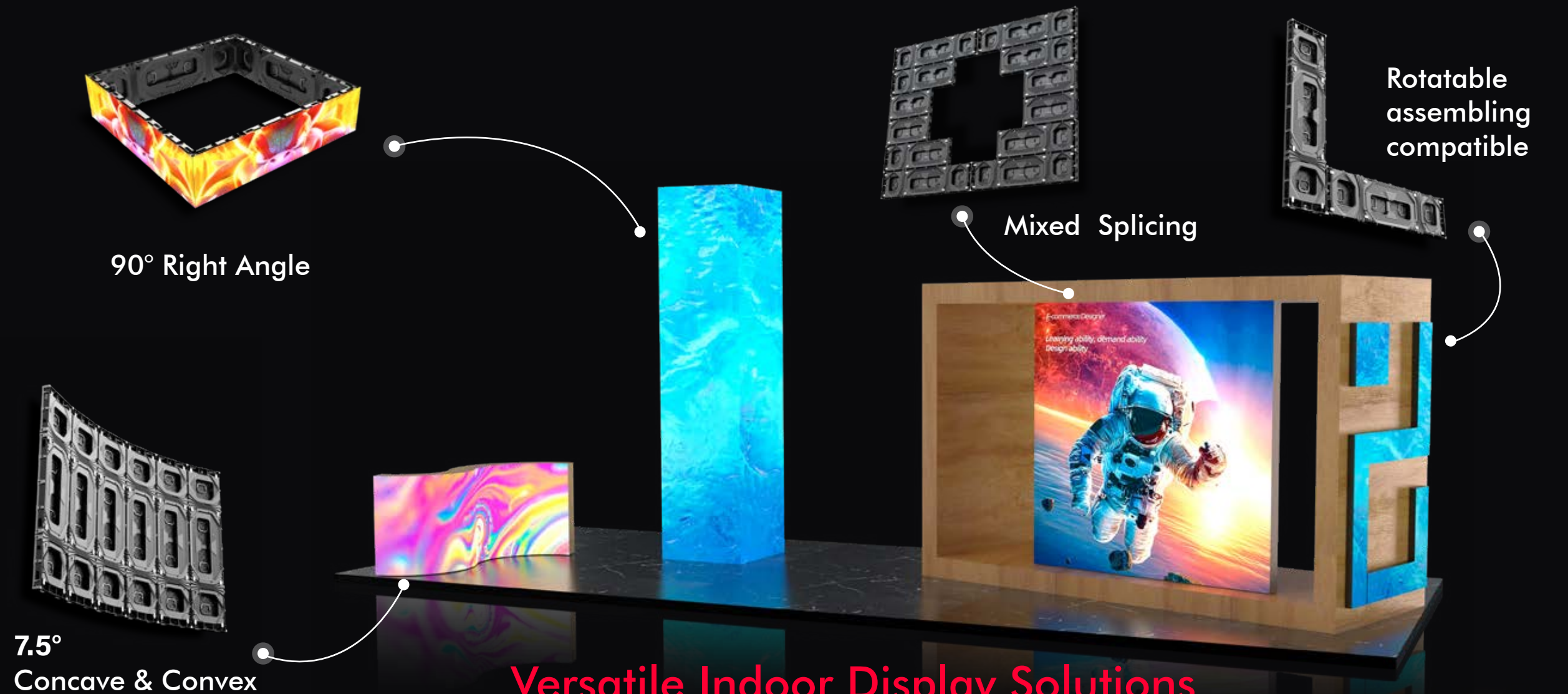
Front and Rear Service

Only 15cm required in the front of screen LED when we do rear maintenance

Up to 5000nits available

Perfect choice for any window LED screen in store, supermarket, bank, airport, etc

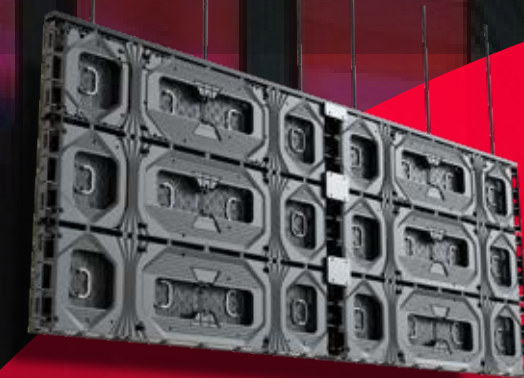
Application



Versatile Indoor Display Solutions

The Unity panel can be configured to create flat, curved, and column screens, making it a versatile solution that suits approximately 90% of indoor applications. Additionally, it offers the capability to form 90-degree column screens, providing even more design flexibility.

Installation Way



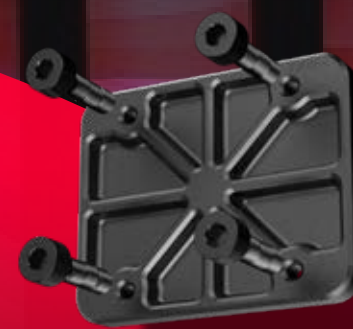
Hanging

2 round ring on top level cabinets, removable



Floor stacking

when we do floor stacking, we can assemble the LED display from front and rear side



Wall mounted

Unity supports flat mounting for screens under 10sqm and wall mounting for larger screens