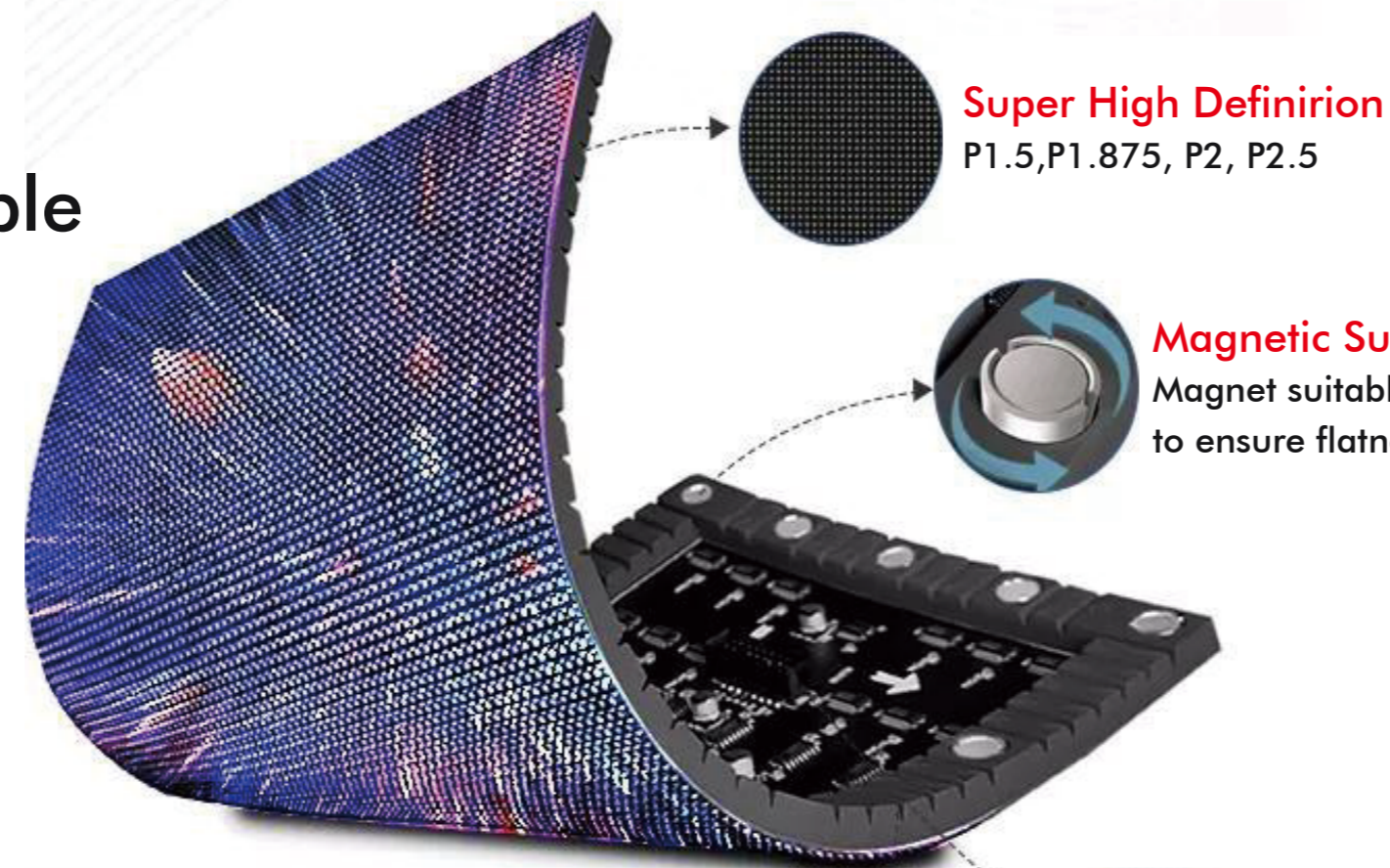


iFlex pro

High Flexibility & Highly Customizable



Super High Definition

P1.5, P1.875, P2, P2.5

Magnetic Suction Installation

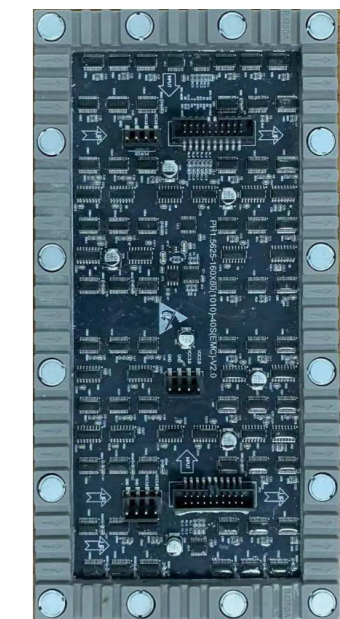
Magnet suitable adjustment to ensure flatness

Flat Cable

Convenient installation, also can prevent row needles wrecking in the transport process.

Good Flexibility

Flexible structure can be bent to different degrees



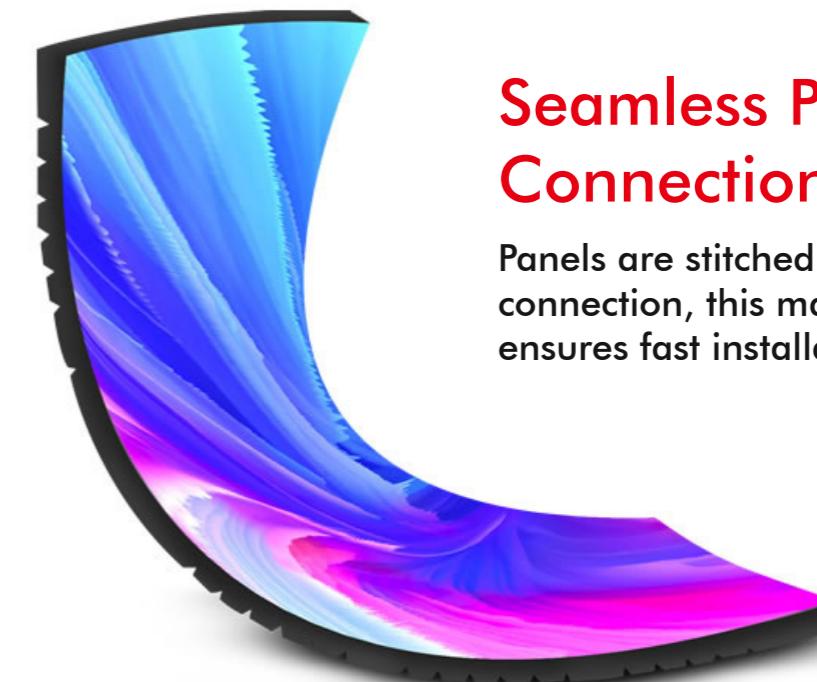
Ultra-thin & Ultra Light

Flexible LED display panel is only weight 75g without bottom frame and mask, the weight is only 150g with bottom frame and mask. Super thin and Super soft.

Seamless Panel Connection

Panels are stitched together via magnetic connection, this magnetic buckle design also ensures fast installation and replacement.

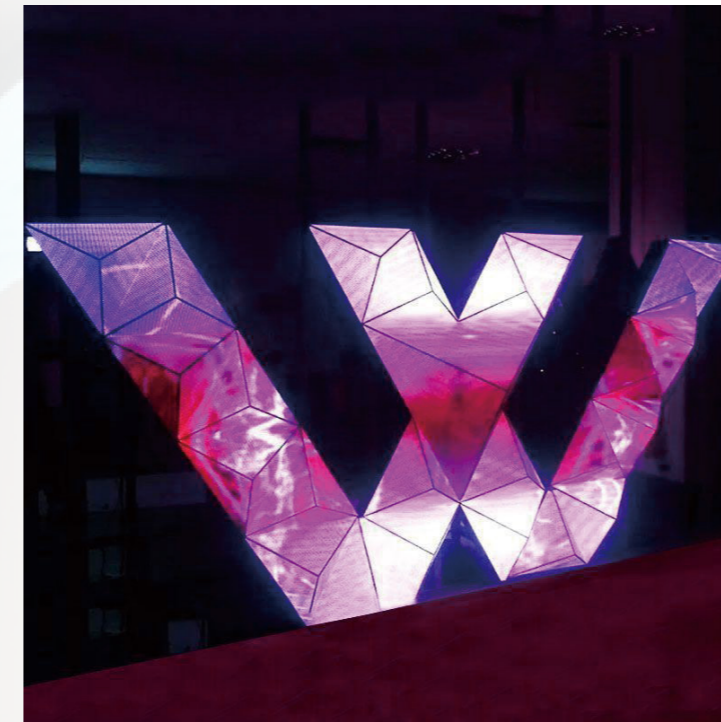
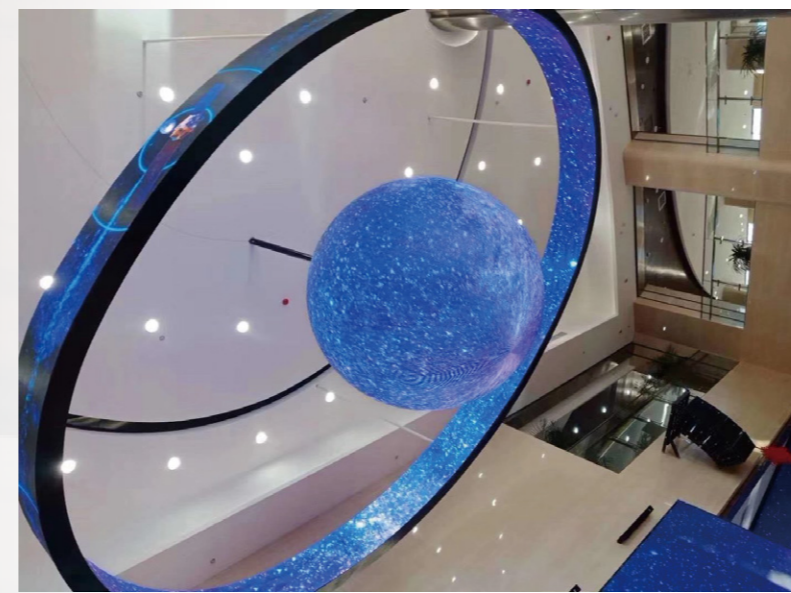
Flexible led module can be spliced into ellipses, triangles, spheres, wavy, curved and cylindrical shapes at will.



Shenzhen iDisplay Technology Co.,Ltd.

Add: 3rd Floor, 5th Building, FLT industrial park, Longhua, Shenzhen, China
Factory: 5th Building, No.6 of Xinhua Avenue, Chengjiang, Zhongkai, Huizhou, China
Tel phone: 86-755-85280348
E-mail: hello@idisplayled.com
www.idisplayled.com

| | | | | | |
|-----------------------------|---|--|--------------|---------|---------|
| Technical parameters | Model | PH1.5625 | PH1.953125 | PH2.064 | PH3.91 |
| | Lamp package | SMD1010 | SMD1010/1212 | SMD1515 | SMD2020 |
| | Pixel density (Dots/m ²) | 409600 | 262144 | 147456 | 65536 |
| | Module size (mm) | 250x125x34mm (LxHxT) | | | |
| | Module resolution | 160x80 | 128x64 | 96x48 | 64x32 |
| | IC | Optional | | | |
| | Refresh rate (Hz) | 3840-7680 | | | |
| | Repetition frequency (Hz) | 50860 | | | |
| | gray scale (bit) | 12-16 adjustable | | | |
| | Signal interface mode | HUB75 | | | |
| | Module bottom shell material | Silicone soft shell | | | |
| | Module weight(kg/pcs) | 0.34 | | | |
| | Cabinet size | Can be customized according to the module size | | | |
| | Cabinet material | Sheet metal sandblasted iron cabinet | | | |
| Cabinet flatness (mm) | ≤0.2 | | | | |
| IPgrade | IP31 | | | | |
| Installation/maintenance | Front and rear installation & maintenance | | | | |
| Optical property parameters | Brightness (nits) | 600-3000 nits | | | |
| | Color temperature (K) | 3000-10000 adjustable | | | |
| | Uniformity of luminance | ≥97% | | | |
| | Horizontal\vertical view | ≥160°/≥140° | | | |
| | Contrast ratio | 333.3340278 | | | |
| Electric parameter | Module supply voltage DC (V) | 5 | | | |
| | Maximum module current DC | 3.5 | 3.5 | 3.5 | 3.5 |
| | Maximum power consumption | 17.5 | 17.5 | 17.5 | 17.5 |
| | Working input voltage AC (V) | 110-220 | | | |
| | Peak power (w/m ²) | 560 | 560 | 560 | 560 |
| | Average power consumption | 186 | 186 | 186 | 186 |
| Operation parameter | Typical life value (hrs) | 100 | | | |
| | operating temperature range | -10-50 | | | |
| | Storage temperature range | -20-60 | | | |
| | operating humidity range | 20-85% | | | |
| | storage humidity range (RH) | 20-80% | | | |



Easy Maintenance
 Together with the light weight and easy access to the top and front for service, maintenance becomes very quick and easy.

