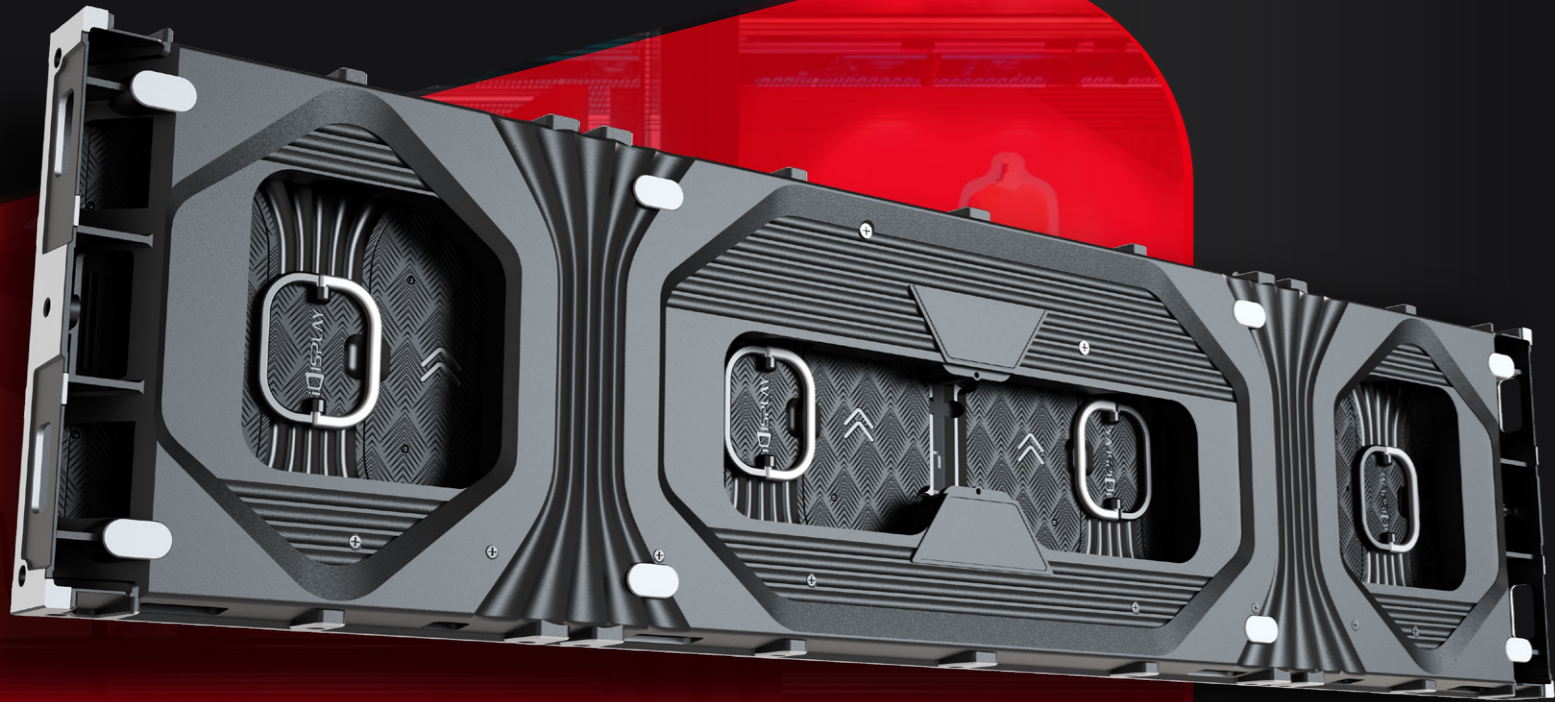


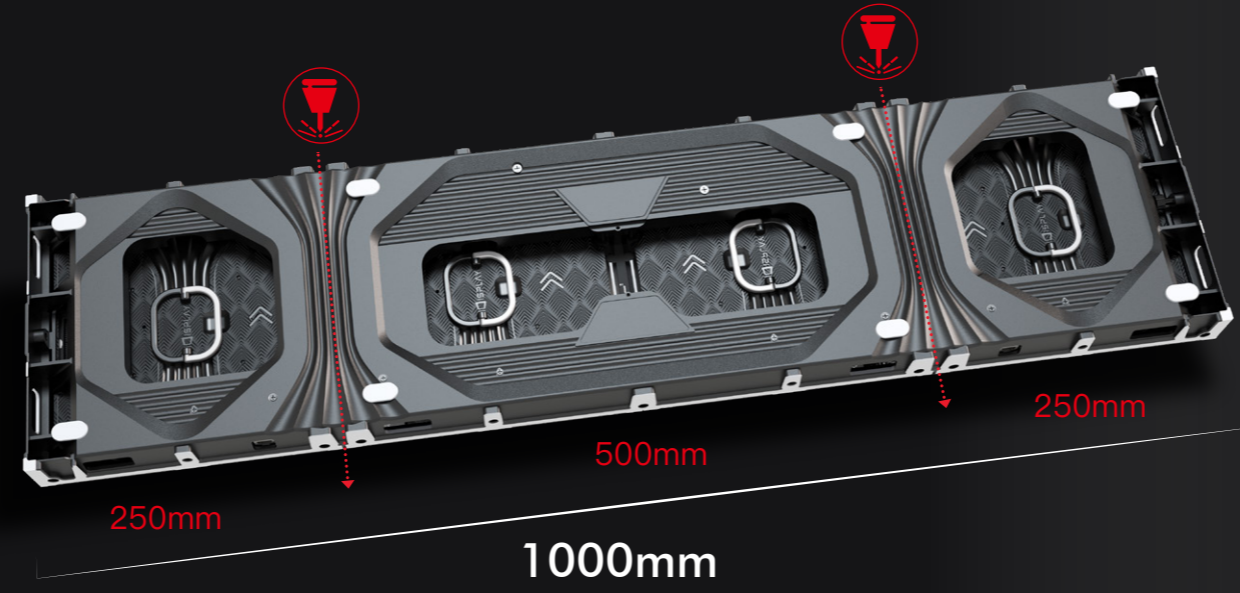
Unity

Indoor Lightweight Front and Rear Service Screen

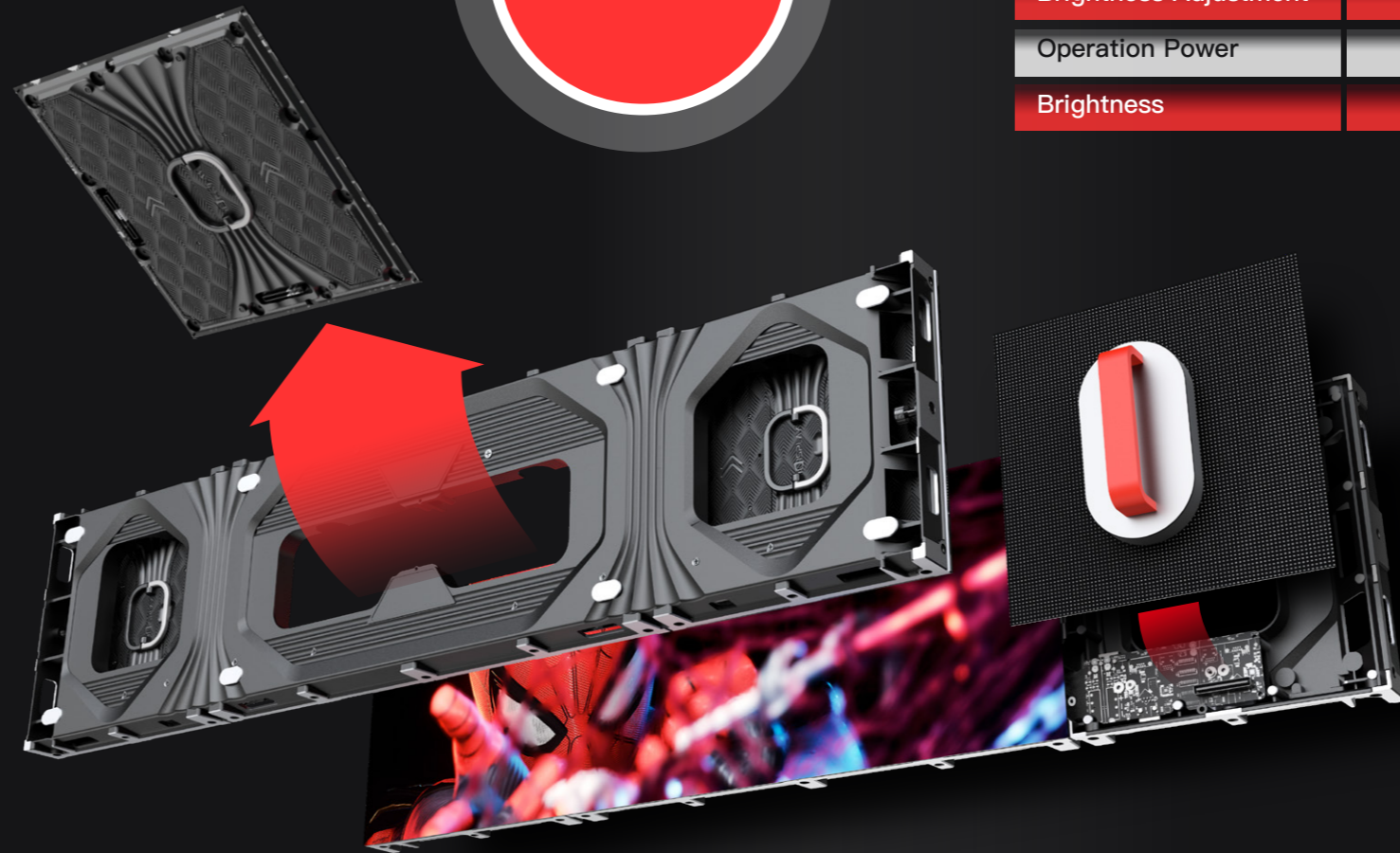


Flexible Panel Sizes

Unity comes with a standard panel size of 1000*250mm, but that's not all! It can be easily cut into two smaller sizes: 750*250mm and 500*250mm. This flexibility allows you to customize your display based on your specific needs.



22kg/m²



90 Degree Column

Create stunning displays with a 90-degree column option. This unique feature allows you to make the most of your space, capturing attention from every angle.

Shenzhen iDisplay Technology Co.,Ltd.

Add: 3rd Floor,5th Building, FLT industrial park, Longhua, Shenzhen, China
 Factory: 5th Building, No.6 of Xinhua Avenue, Chengjiang, Zhongkai, Huizhou, China
 Tel phone: 86-755-85280348
 E-mail: hello@idisplayled.com
 www.idisplayled.com



Pixel Pitch	1.953mm	2.6mm	2.97mm	3.91mm	4.81mm
LED Configuration	SMD1515		SMD2020		
Pixel Density	262,144dot/m ²	147,456dot/m ²	112,896dot/m ²	65,536dot/m ²	43,264dot/m ²
Module size	250*250mm				
Module Resolution	128*128dot	96*96dot	84*84dot	64*64dot	52*52dot
Cabinet Size	1000*250mm				
Cabinet Resolution	512*128dot	384*96dot	336*84dot	256*64dots	208*52dots
CabinetWeight	5.5kg				
IP Rating (front/back)	IP20				
Scanning Mode	32s		28s	16s	13s
Brightness	800-1000 cd/m ²				
Viewing Angle	160°/160				
View Distance	>1.9m	>2.6m	>2.9m	>4m	>5m
Gray scale	14bit				
Display Scale	4398 Billion				
Max.Power Consumption	550W/m ²				
Ave.Power Consumption	160W/m ²				
Refresh Frequency	≥1920Hz				
Environmental	Indoor		Semi-Outdoor		
Brightness Adjustment	0-100 levels adjustable				
Operation Power	AC100-240V 50/60Hz				
Brightness	500-800nits		3000-5000nits		

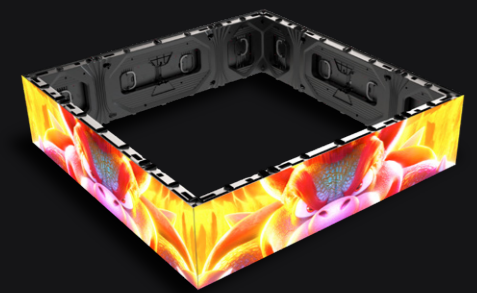
Front and Rear Service

Only 15cm required in the front of screen LED when we do rear maintenance

Up to 5000nits available

Perfect choice for any window LED screen in store, supermarket, bank, airport, etc

Application



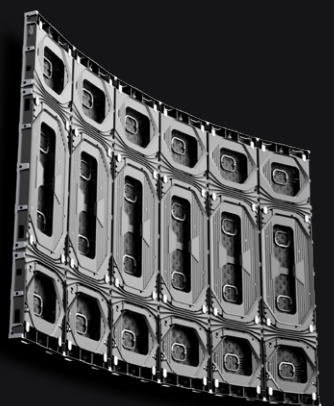
90° Right Angle



Mixed Splicing



Creative Shape Compatible



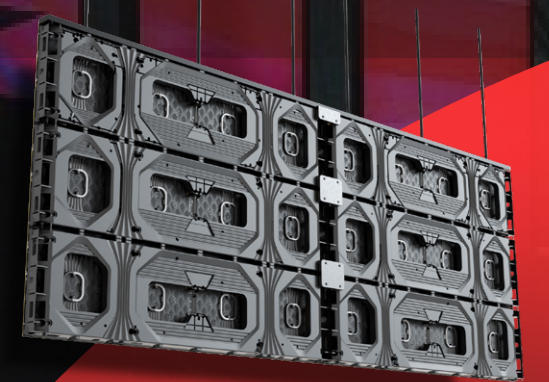
7.5° Concave & Convex



Various Creative Shapes

Unity panel can be assembled into a flat, curve, column screen which fit with 90% of indoor application. Besides, it can be assembled into these creative shapes via wall-mounted, hanging, floor stacking way

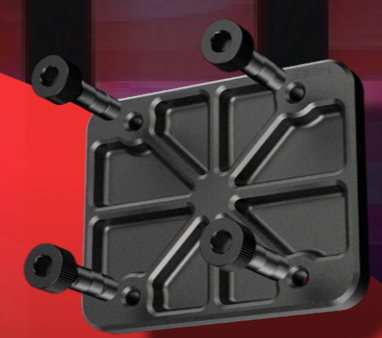
Installation Way



Hanging
2 round ring on top level cabinets, removable



Floor stacking
when we do floor stacking, we can assemble the LED display from front and rear side



Wall mounted
Flat mounting on wall