

# Quantum

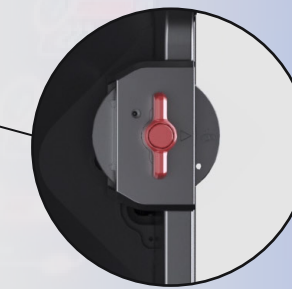
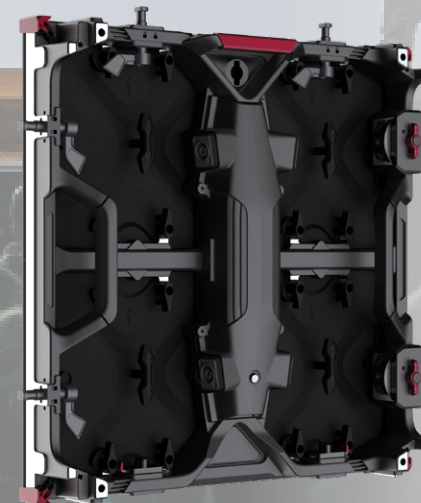
Cost Effective and Multi-function Rental Panel



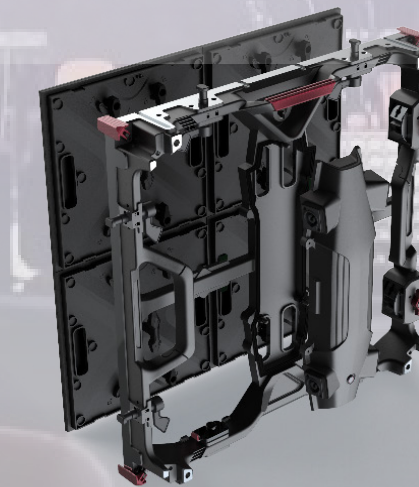
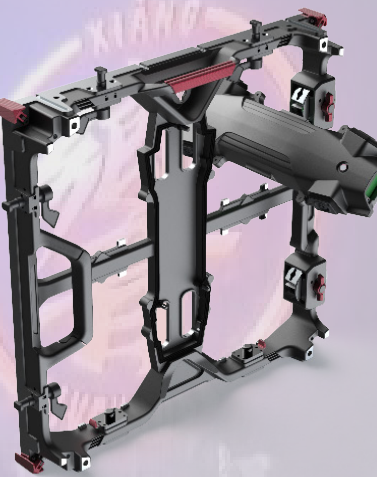
|   | Indoor                         |         |                             |             |             | Outdoor                         |                      |             |             |
|---|--------------------------------|---------|-----------------------------|-------------|-------------|---------------------------------|----------------------|-------------|-------------|
| Pixel Pitch(mm)                             | 1.5                            | 1.9     | 2.6                         | 2.9         | 3.9         | 1.9                             | 2.9                  | 3.9         | 4.8         |
| LED Configuration                           | SMD1212                        | SMD1515 | SMD1515                     | SMD2020     | SMD2020     | SMD1415                         | SMD1415              | SMD1415     | SMD1921     |
| Pixel Density(dots/m) <sup>2</sup>          | 409,600                        | 262,144 | 147,456                     | 112,896     | 65,536      | 262,144                         | 112,896              | 65,536      | 43,264      |
| Brightness(cd/m) <sup>2</sup>               | ≥800                           | ≥1000   |                             |             |             | ≥4,500                          | ≥5,500               |             |             |
| Module Size(W x H mm)                       | 250x250                        | 250x250 | 250x500                     | 250x500     | 250x500     | 250x250                         | 250x500              | 250x500     | 250x500     |
| Module Resolution (dots)                    | 160x160                        | 128x128 | 96x192                      | 84x168      | 64x128      | 128x128                         | 84x168               | 64x128      | 52x104      |
| Panel Size(W x H mm)                        | 500x500                        |         | 500x500 and 500x1000        |             |             | 500x500                         | 500x500 and 500x1000 |             |             |
| Panel Resolution (dots)                     | 320x320                        | 256x256 | 192x192/384                 | 168x168/336 | 128x128/256 | 256x256                         | 168x168/336          | 128x128/256 | 104x104/208 |
| Panel Weight(Kg/pc)                         | GOB & Diecast Aluminum 10Kg    |         | Diecast Aluminum 9Kg / 14Kg |             |             | Diecast Aluminum 9.5Kg / 14.5Kg |                      |             |             |
| Curved Angle                                | Support -6°, -3°, 0°, +3°, +6° |         |                             |             |             | Support -6°, -3°, 0°, +3°, +6°  |                      |             |             |
| Power Consumption(Max/Avg) W/m <sup>2</sup> | 450 / 150                      |         |                             |             |             | 600 / 200                       |                      |             |             |
| Refresh Rate                                | 3840Hz                         |         |                             |             |             | 3840Hz                          |                      |             |             |
| Gray Scale                                  | ≤16 bits                       |         |                             |             |             | ≤16 bits                        |                      |             |             |
| IP Grade                                    | IP30                           |         |                             |             |             | IP65                            |                      |             |             |

**Less weight,  
Strong Chassis**

9kg/panel for 500\*500mm  
14kg/panel for 500\*1000mm



Quality and quick curve lock  
Support -6, -3, 0, +3, +6 degree



## Easy maintenance

Modular and easy maintenance design with front & rear accessible interchangeable module



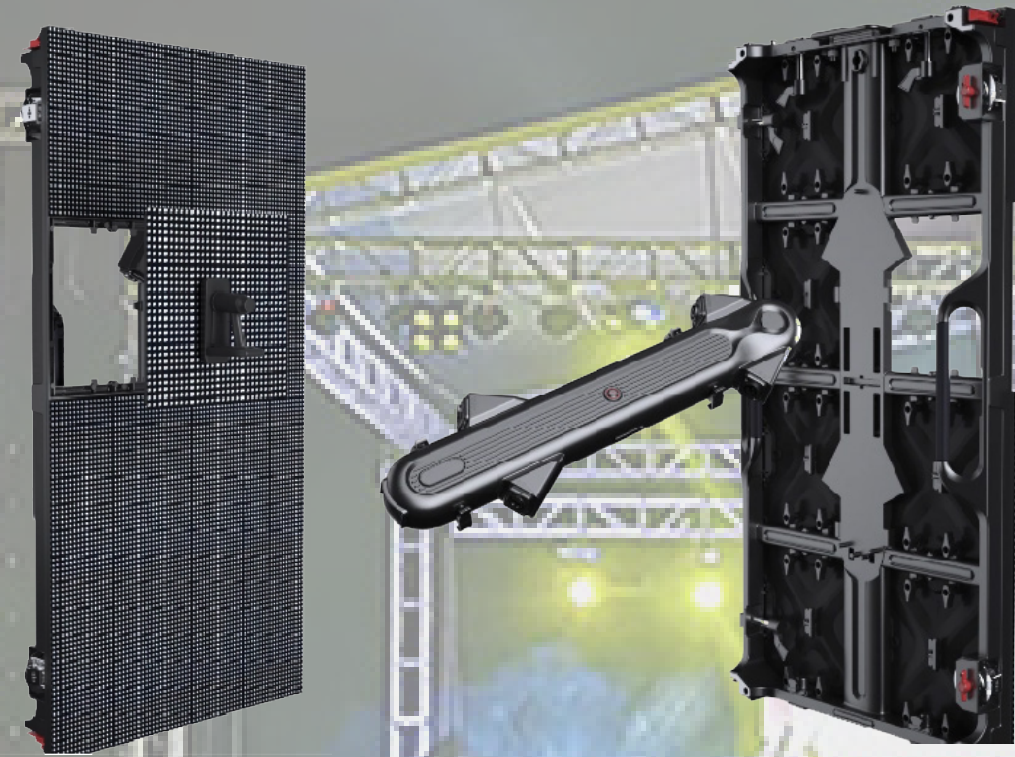
Shenzhen iDisplay Technology Co.,Ltd.

Add: 3rd Floor,5th Building, FLT industrial park, Longhua, Shenzhen, China  
Factory: 5th Building, No.6 of Xinhua Avenue, Chengjiang, Zhongkai, Huizhou, China  
Tel phone: 86-755-85280348  
E-mail: hello@idisplayled.com  
www.idisplayled.com



## Powerful compatibility

- One module for each specs
- One spine for all indoor specs in the same size panel
- One spine for all outdoor specs in the same size panel
- One chassis for all specs

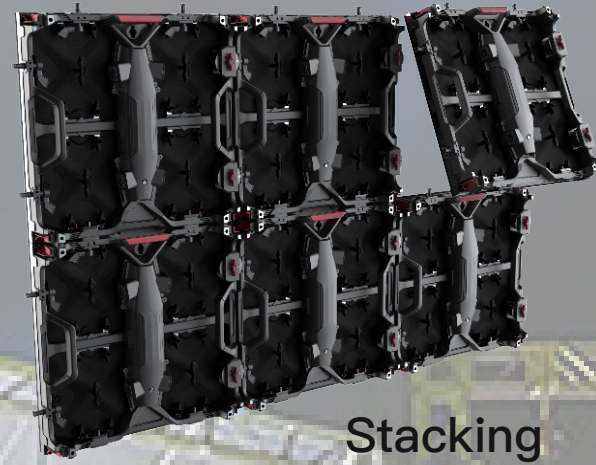


## Multi-shape screen

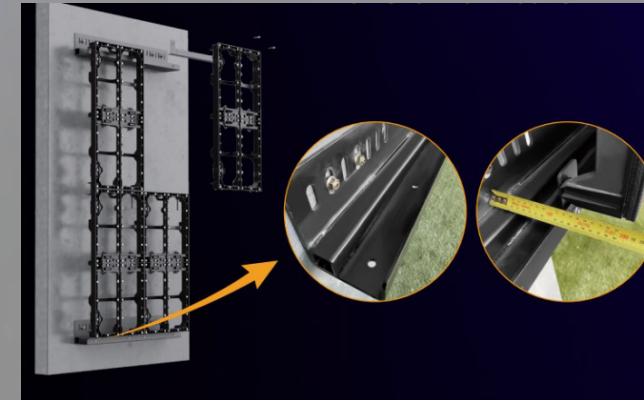
Flat, curve, column



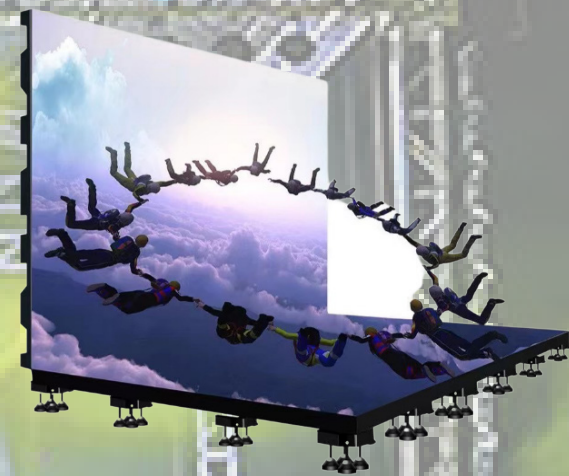
## Multi-installation way



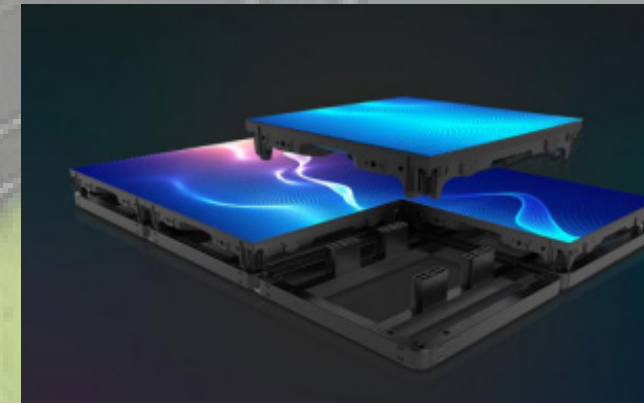
Stacking



Wall mounted



Mixed assembly



Floor mounted

