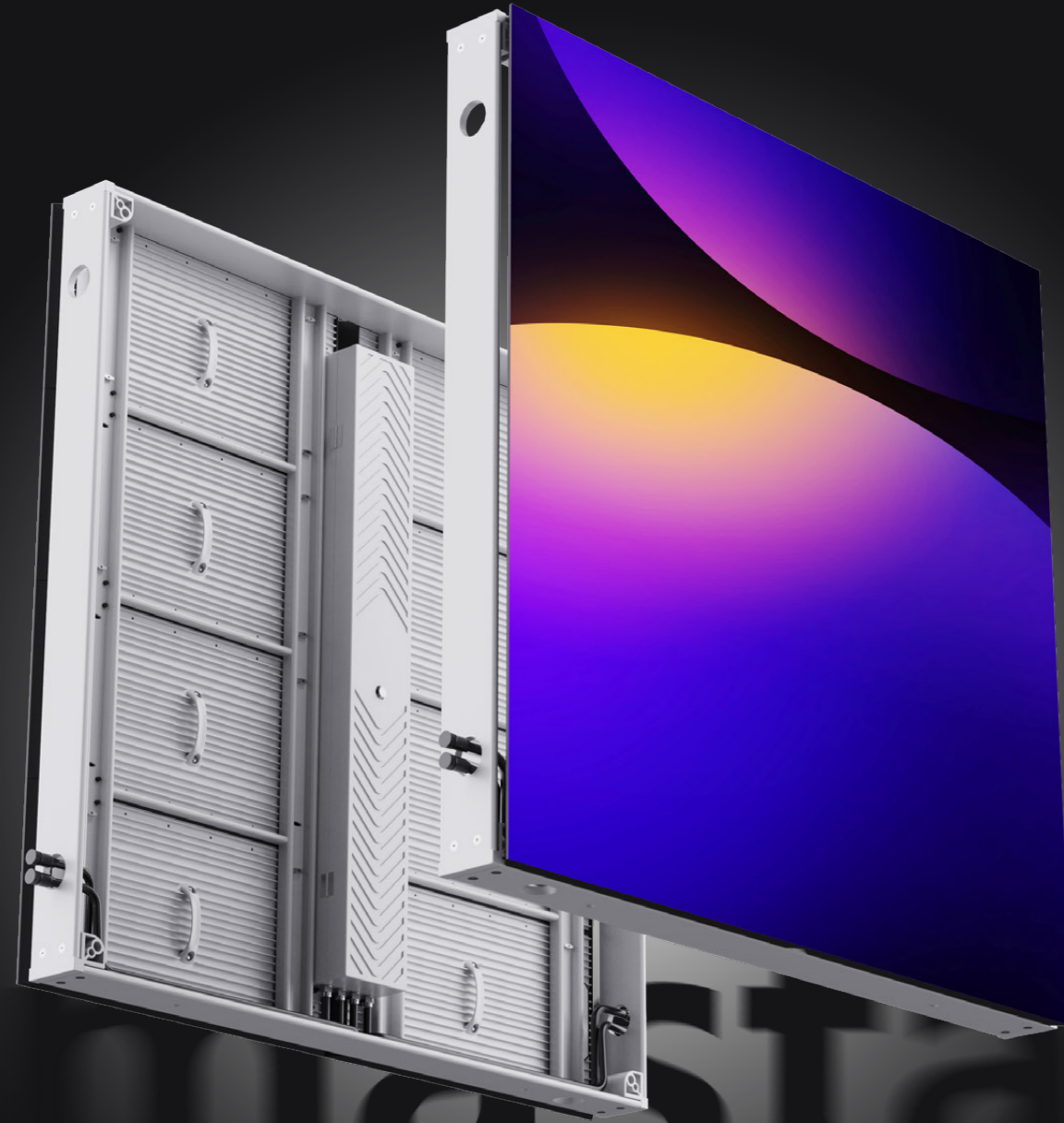


# OOHmasta

Outdoor Lightweight Front & Rear Service Screen

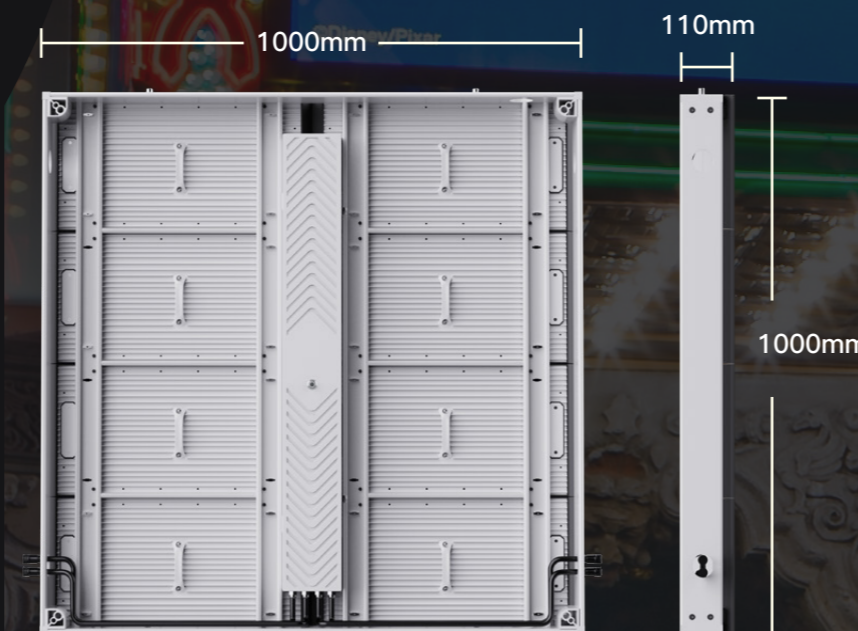


## Specs

Item	P3.91	P3.91	P4.81	P4.81	P6.25	P7.8	P10.4
Pixel Pitch	3.906mm	3.906mm	4.807mm	4.807mm	6.25mm	7.8125mm	10.417mm
LED Configuration	1R1G1B SMD1921	1R1G1B SMD1921	1R1G1B SMD1921	1R1G1B SMD1921	1R1G1B SMD2727	1R1G1BSMD2727	1R1G1BSMD2727
Pixel Density	65,536dots/m <sup>2</sup>	65,536dots/m <sup>2</sup>	43,264dots/m <sup>2</sup>	43,264dots/m <sup>2</sup>	25,600dots/m <sup>2</sup>	16,384dots/m <sup>2</sup>	9,216dots/m <sup>2</sup>
Module Size	500mmx250mm	500mmx250mm	500mmx250mm	500mmx250mm	500mmx250mm	500mmx250mm	500mmx250mm
Module Resolution	128dots x 64dots	128dots x 64dots	104dots x 52dots	104dots x 52dots	80dots x 40dots	64dots x 32dots	48dots x 24dots
Cabinet Size	1000mm x 1000mm or 1500mm x 1000mm or 1000mmx1500mm						
Cabinet Resolution 1000mmx1000mm	256dots x 256dots	256dots x 256dots	208dots x 208dots	208dots x 208dots	160dots x 160dots	128dots x 128dots	96dots x 96dots
Cabinet Weight	30kg/m <sup>2</sup>	30kg/m <sup>2</sup>	30kg/m <sup>2</sup>	30kg/m <sup>2</sup>	30kg/m <sup>2</sup>	30kg/m <sup>2</sup>	30kg/m <sup>2</sup>
IP Rating ( front/back)	IP65						
Scanning Mode	1/8scan	1/16scan	1/7scan	1/13scan	1/5scan	1/4scan	1/2scan
Brightness Intensity	5500- 6000nits	4500- 5000nits	5500-6000nits	4500- 5000nits	6000-6500nits	6000-6500nits	6000-6500nits
Viewing Angle (H/V)	H:110° / V:110°		H:110° / V:110°				
View Distance	≥3.9 m	≥3.9 m	≥4.8 m	≥4.8 m	≥6.2 m	≥7.8 m	≥10 m
Gray Scale	14bits~22bits(depends on IC driver and controller solution )						
Max.Power Consumption	580W/m <sup>2</sup>	580W/m <sup>2</sup>	580W/m <sup>2</sup>	580W/m <sup>2</sup>	580W/m <sup>2</sup>	580W/m <sup>2</sup>	580W/m <sup>2</sup>
Ave.Power Consumption	200W/m <sup>2</sup>	200W/m <sup>2</sup>	200W/m <sup>2</sup>	200W/m <sup>2</sup>	200W/m <sup>2</sup>	200W/m <sup>2</sup>	200W/m <sup>2</sup>
Refresh Frequency	1,920Hz~3,840Hz(depends on IC driver solution)						
Environmental	OUTDOOR	OUTDOOR	OUTDOOR	OUTDOOR	OUTDOOR	OUTDOOR	OUTDOOR
Color Temperature	6500-9300k						
Brightness Adjustment	0 - 100 levels adjustable						
Control Mode	Synchronous display with control PC by DVI						
Support Input	DVI, HDMI1.3, DP1.2, SDI, HDMI2.0, etc.						
Operation Power	AC110V~AC220V @ 50Hz / 60Hz						
Operating Temperature	-20°C~50°C						
Operating Humidity	10%~90%						
Operating Life	100,000hours						

## Interchangeable module

Easy to make replacement, the module is compatible at any location of chassis.

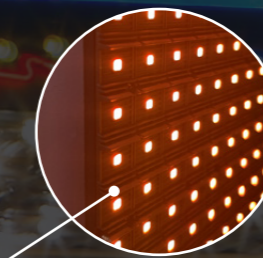


## V-0 Fire Resistance

PCB, Module housing, cable in power box and between panels are all V.0 fire resistance

## light absorbing louver

When a ray of light approaches the leading edge design louver, it forms a diffuse reflection on the surface, so no spots are formed. It acts like a light absorber.



## Lightweight

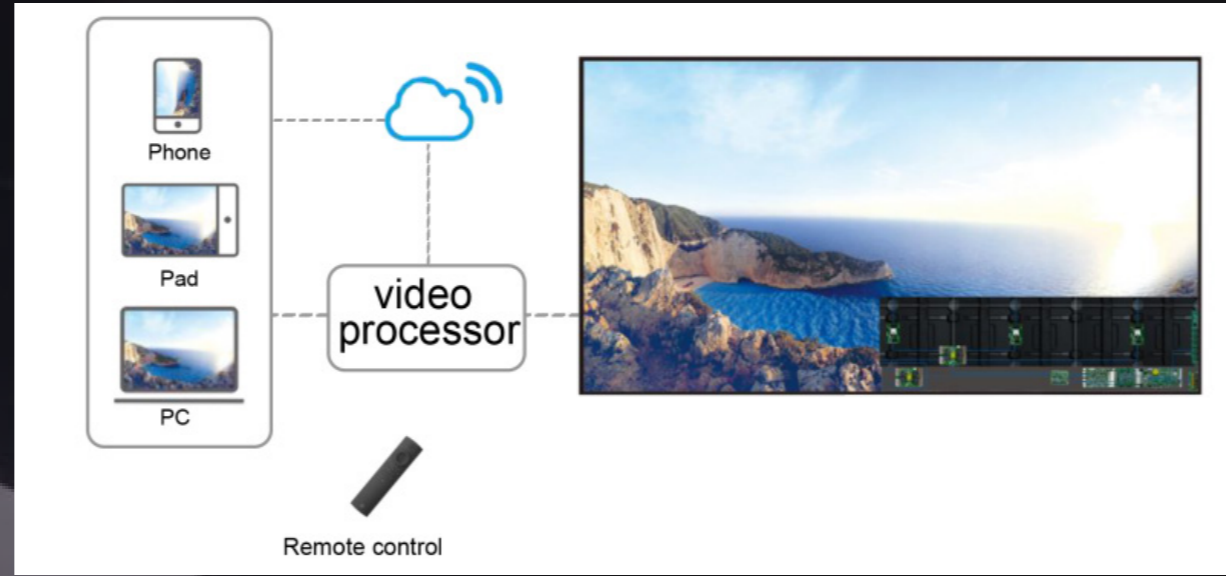
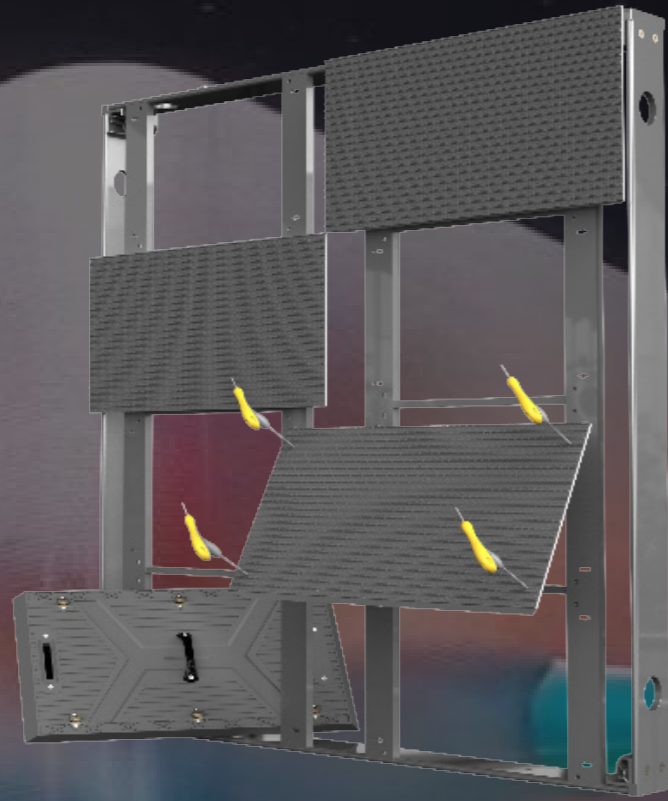
With lighter aluminum profile design, it is total 30kgs/sqm, compared to traditional metal steel cabinet, is around 30kgs/sqm less.



Shenzhen iDisplay Technology Co.,Ltd.

Add: 3rd Floor,5th Building, FLT industrial park, Longhua, Shenzhen, China  
 Factory: 5th Building, No.6 of Xinhua Avenue, Chengjiang, Zhongkai, Huizhou, China  
 Tel phone: 86-755-85280348  
 E-mail: hello@idisplayled.com  
 www.idisplayled.com

**Fast front/rear maintenance**



- Intelligent control, the control system allows you to create, shedule, manage content from anywhere, any devices.
- Smart healthy monitoring, you can monitor the health of led display at anytime and anywhere. With brightnesss sensor, the led display brightness can be adjustable according to ambienet environment brightness.



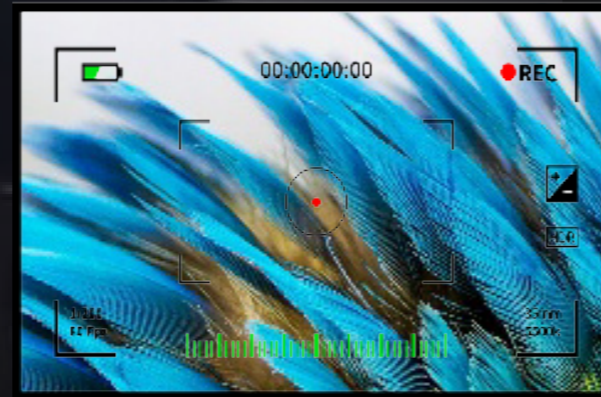
- Easy to get a perfect ratio in 4:3 and 16:9
- Customized resolution: 1080p,2K,4K,8K, etc

Is a better choice for a high resolution outdoor screen and glasses-free 3D led display, because it is easy to make a seamless curve or corner led screen



**Energy saving**

Less power consumption compared to tradtional cabinet, which save at least 20% power consumption



- High refresh(  $\geq 1920-3840\text{hz}$ ), no flicker when taking pictures.
- High Brightness, up to 10000nits.

**Heat Dissipation**

Great heat dissipation with aluminum chassis and aluminum housing module. Therefore, the outdoor LED panel can work properly without an air conditioner even when the weather temperature is as high as 55 degrees.

