

MASTA PRO

Outdoor Lightweight Front & Rear Service Screen



Specs

ITEM	P5	P6.67	P8	P10
LED	SMD1921	SMD2727	SMD2727	SMD2727
Pixel Pitch (mm)	5	6.67	8	10
Module Resolution	96x64	72x48	60x40	48x32
Module Size (WxH mm)	480x320	480x320	480x320	480x320
Pixel Density (Pixels/m ²)	40,000	22,500	15,625	10,000
Panel Resolution	192x192	144x144	120x120	96x96
Panel Size (WxH mm)	960x960	960x960	960x960	960x960
Gray Scale (bit)	≥14	≥14	≥14	≥14
Weight (kg/m ²)	28	28	28	28
Ingress Protection	IP66/IP66	IP66/IP66	IP66/IP66	IP66/IP66
Refresh Rate (Hz)	3,840	3,840	3,840	3,840
Brightness (nit)	5,500-6,000	6,000-9,000	6,000-10,000	6,000-10,000
Maintenance	Front/Rear	Front/Rear	Front/Rear	Front/Rear
Contrast	8,000:1	9,000:1	10,000:1	10,000:1
Power Consumption (W/m ²)	580/150	580/150	550/150	550/150

Super Waterproof



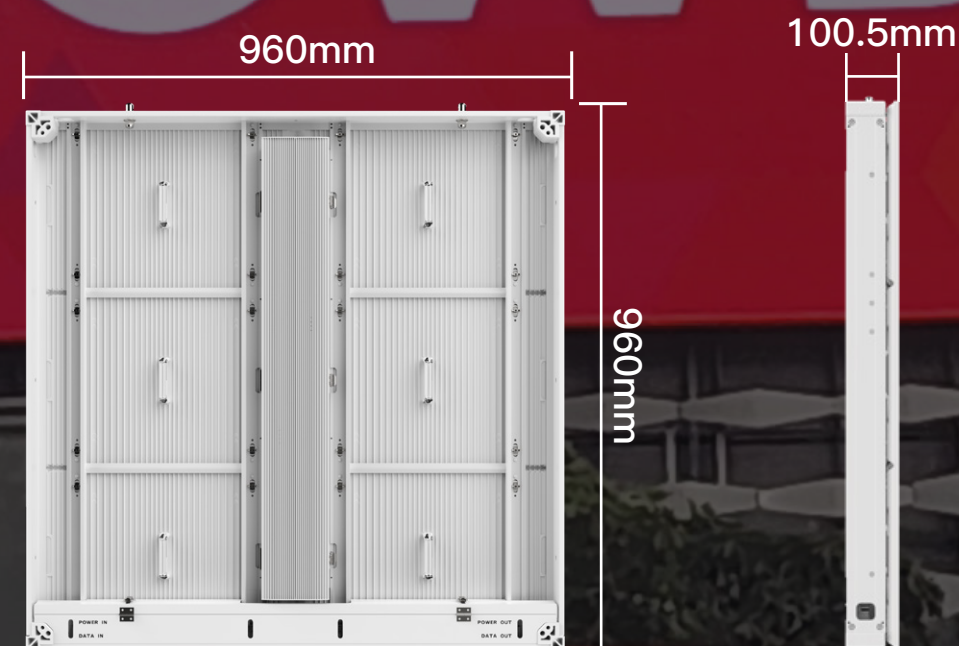
IP66

Super Heat Dissipation

The panel uses very good components, for example, highly-efficient LED, fanless & modular PSU and reliable IC driver... besides, we structurally design the best heat dissipation for the modules and PSU, i.e. the module shell and powerbox are made of diecast a luminum with large heat sink.



Dimensions



iD ISPLAY

Shenzhen iDisplay Technology Co.,Ltd.

Add: 3rd Floor,5th Building, FLT industrial park, Longhua, Shenzhen, China
 Factory: 5th Building, No.6 of Xinhua Avenue, Chengjiang, Zhongkai, Huizhou, China
 Tel phone: 86-755-85280348
 E-mail: hello@idisplayled.com
 www.idisplayled.com

High Contrast, High Brightness

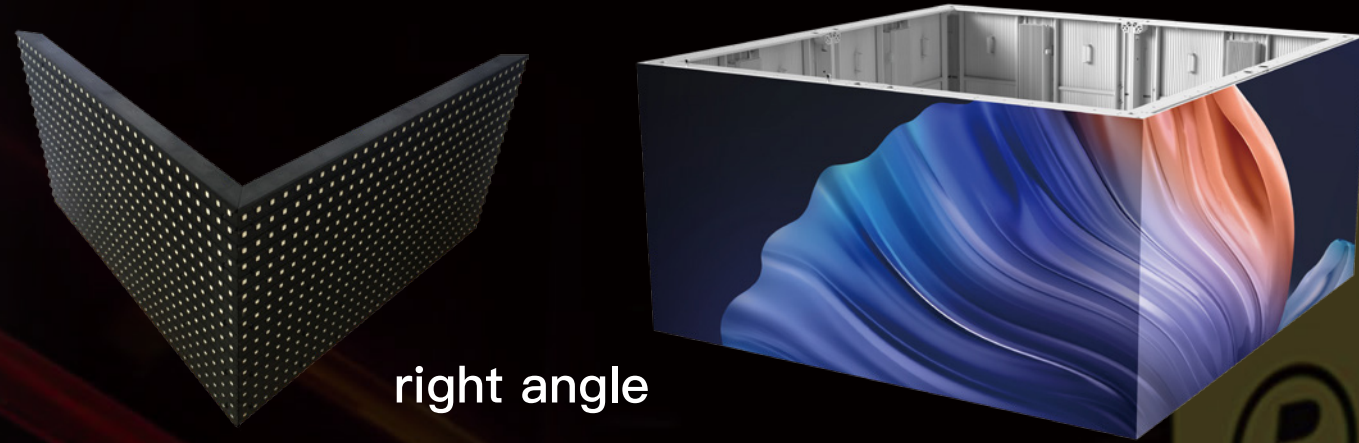
The panle uses bright SMD LEDs that can bring up to 10000nits brightness, which contributes to clear and bright images on screen even in strong outdoor direct sunlight.

WallMount Installation

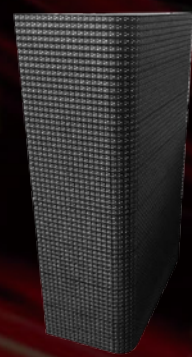


Creative Application

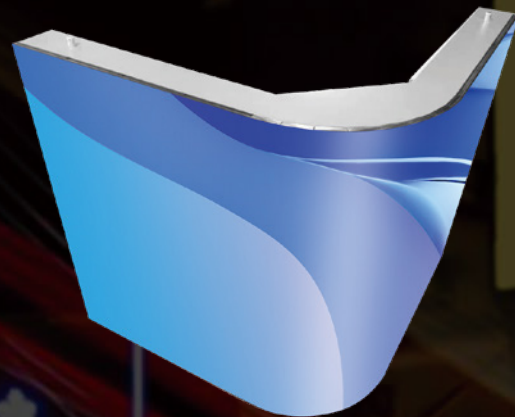
The panel allows you to realize many creative solutions, it can curve, at right angle, more easily to make naked eye 3D display.



right angle



curve



flat



Other Installation



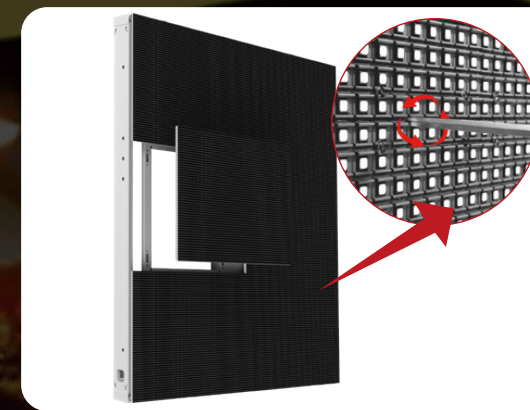
Low Power Consumption

The maximum power consumption is only 550w/ m², the panel saves more than 30% of energy consumption compared with the traditional outdoor panel.



Fast Installation and Maintenance

Front Access:



1/4 turn on the module latches from front, the module can be pulled out.

Rear Access:



1/4 turn on the module latches from rear, the module can be taken out.

