



i-VMS Series  
Outdoor Traffic Sign

iDisplay



### Description


iDisplay i-VMS is designed for traffic sign.  
We have a lot of experience in this field to  
reach all the specific requirements


# About i-VMS


## Feature

- Available pixel pitch: Outdoor 10mm, 12mm, 16mm, 20mm, 25mm
- Waterproof and Dustproof: IP66
- Dot to dot detection available
- Brightness/Temperature/Humidity detectable
- Door/Fan/Power supply/Ribbon cable detectable
- High brightness available: >10000nits

**IP66** Waterproof and  
Dustproof IP66

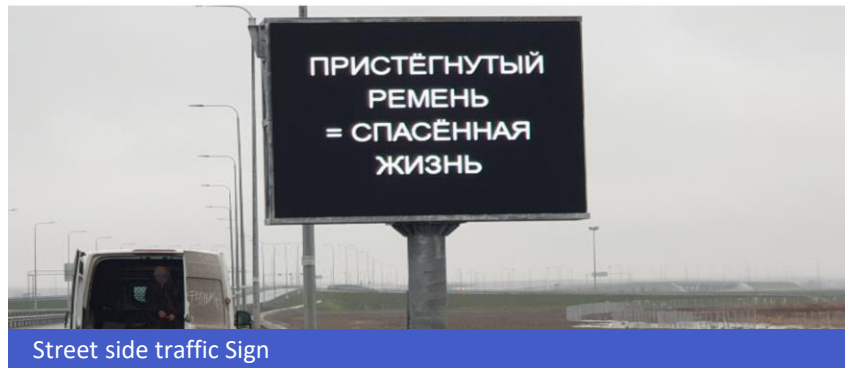
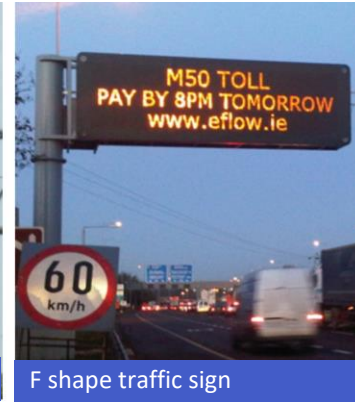
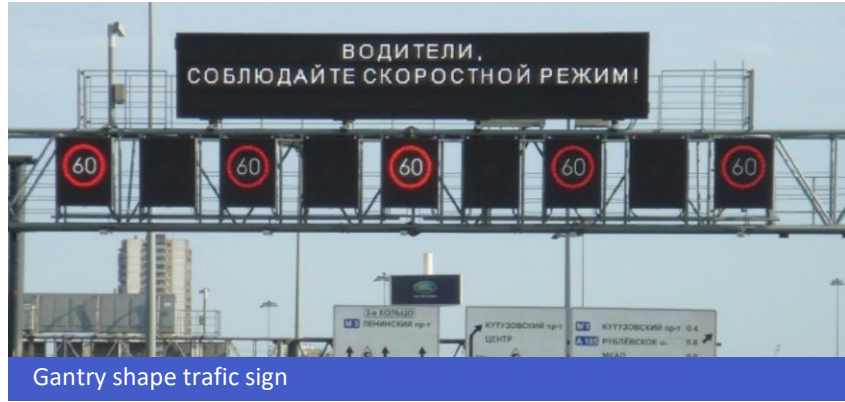
 Dot to dot  
detection available

 Easy installation

 High brightness



# Application of Traffic Sign



# Specification

Pixel Pitch	10mm	12mm	16mm	20mm	25mm
<b>LED Configuration</b>	1R1G1B DIP346				
<b>Pixel Density</b>	10000dot/m <sup>2</sup>	6944dot/m <sup>2</sup>	3906dot/m <sup>2</sup>	2500dot/m <sup>2</sup>	1600dot/m <sup>2</sup>
<b>Module size</b>	160*160mm	192*192mm	256*128mm	320*320mm	200*200mm
<b>Module Resolution</b>	16*16dot		16*8dot	16*16dot	8*8dot
<b>Cabinet Size</b>	960*960mm	1152*768mm	1024*768mm	1280*960mm	1200*1200mm
<b>Cabinet Resolution</b>	96*96dot	96*64dot	64*48dot		48*48dot
<b>Cabinet Weight</b>	65kg/m <sup>2</sup>				
<b>IP Rating ( front/back)</b>	IP66				
<b>Scanning Mode</b>	4S	2S	Static		
<b>Brightness Intensity</b>	≥10000 cd/m <sup>2</sup>				
<b>Viewing Angle</b>	±15°each side				
<b>Gray Scale</b>	14bit				
<b>Display Scale</b>	4398 Billion				
<b>Max.Power Consumption</b>	750W/m <sup>2</sup>	800W/m <sup>2</sup>		750W/m <sup>2</sup>	650W/m <sup>2</sup>
<b>Ave.Power Consumption</b>	200W/m <sup>2</sup>				180W/m <sup>2</sup>
<b>Refresh Frequency</b>	≥1920Hz				
<b>Environmental</b>	Outdoor				
<b>Brightness Adjustment</b>	0-100 levels adjustable				
<b>Control Mode</b>	Synchronous display with control PC by DVI				
<b>Support Input</b>	Composite, S-Vido, Component, VGA, DVI, HDMI, HD-SDI				
<b>Operation Power</b>	AC100-240V 50/60Hz				
<b>Operating Temperature</b>	-40°C - +60°C				
<b>Operating Humidity</b>	10-90%RH				
<b>Operating Life</b>	100,000hours				



**Shenzhen iDisplay Technology Co.,Ltd**

---

Add:2nd building of Nangang Park,Shiyan,Baoan,Shenzhen,China

Tel:86-755-85280348 Email: [hello@idisplayled.com](mailto:hello@idisplayled.com) Web: [www.idisplayled.com](http://www.idisplayled.com)