



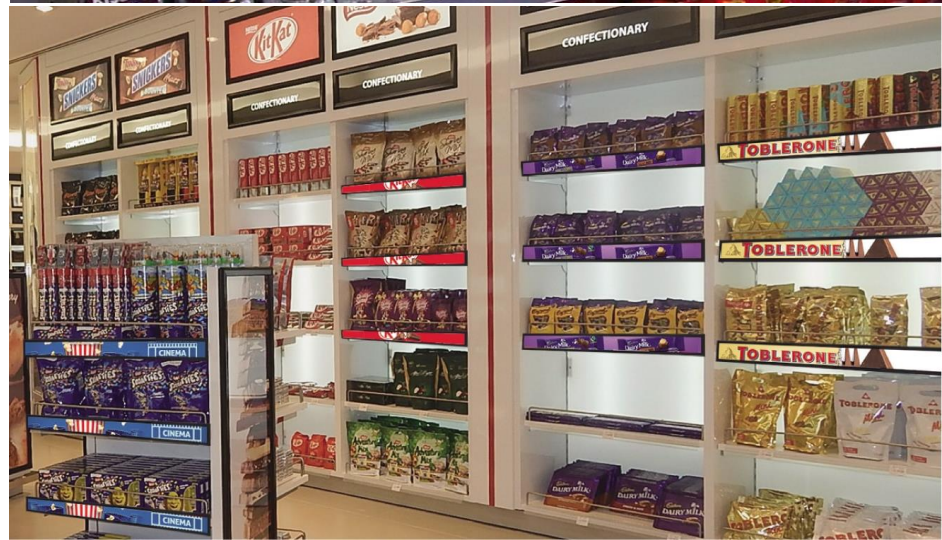
i-shelf

Indoor Panel for Store Shelves

About i-shelf

Description

iDisplay iShelf is designed for indoor led display application, such as supermarket and store shelves, shopping mall showcase, etc. It is a better way to present your brand and product via giving visitors a very splendid ads attraction.



About i-shelf



Feature

- Pixel pitch:1.875mm
- Module size 300x60mm
- Display size: 300x60mm, 900x60mm 1200x60mm or customized size
- Aluminum profile
- Independent power supply, one control 4panels of 900mm
- Support independent control or group control
- Group control remotely via 4G, WIFI or USB



Various dimensions



GOB surface processing technology



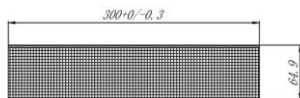
4G, Wi-Fi or USB
Remote control



Easy installation

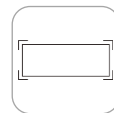
Various Dimensions

Display size: 300x60mm, 900x60mm 1200x60mm
or customized size





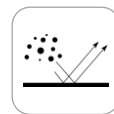
Glue on board led packing , is one of recognized led packing tend



Anti-collision

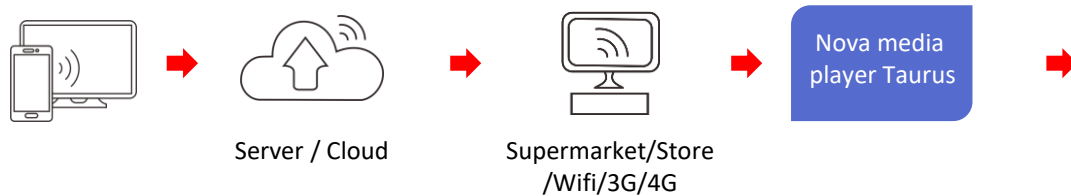


Waterproof

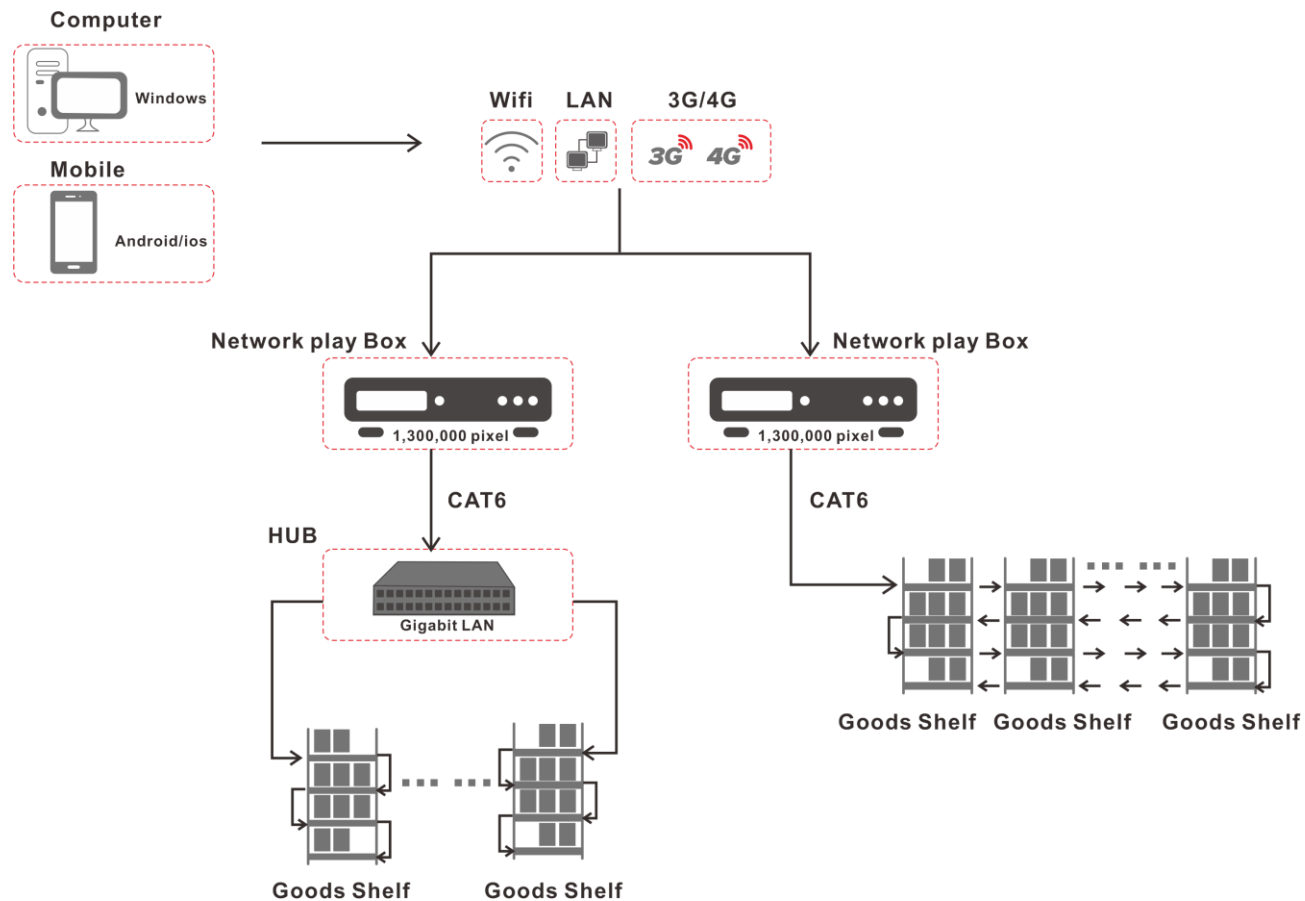


Dustproof

2 Kinds of Group Control Way



Cabling way



Specification

Pixel Pitch	1.875mm-GOB technology
LED Configuration	SMD1010
Pixel Density	284,444dot/m ²
Module size	300*60mm
Module Resolution	160*32dot
Display Size	300*60/600*60/900*60mm
Cabinet Size	305*65/605*65/905*65mm
Cabinet Resolution	160*32/320*32/480*32dot
IP Rating (front/back)	IP54/IP43
Scanning Mode	32s
Brightness	600-800cd/m ²
Viewing Angle	160°/160°
View Distance	>1.8m
Gray Scale	14bit
Display Scale	4398 Billion
Max.Power Consumption	850W/m ²
Ave.Power Consumption	250W/m ²
Refresh Frequency	≥1920Hz
Environmental	Indoor
Brightness Adjustment	0-100 levels adjustable
Operation Power	AC100-240 50/60Hz



Shenzhen iDisplay Technology Co.,Ltd

www.idisplayled.com